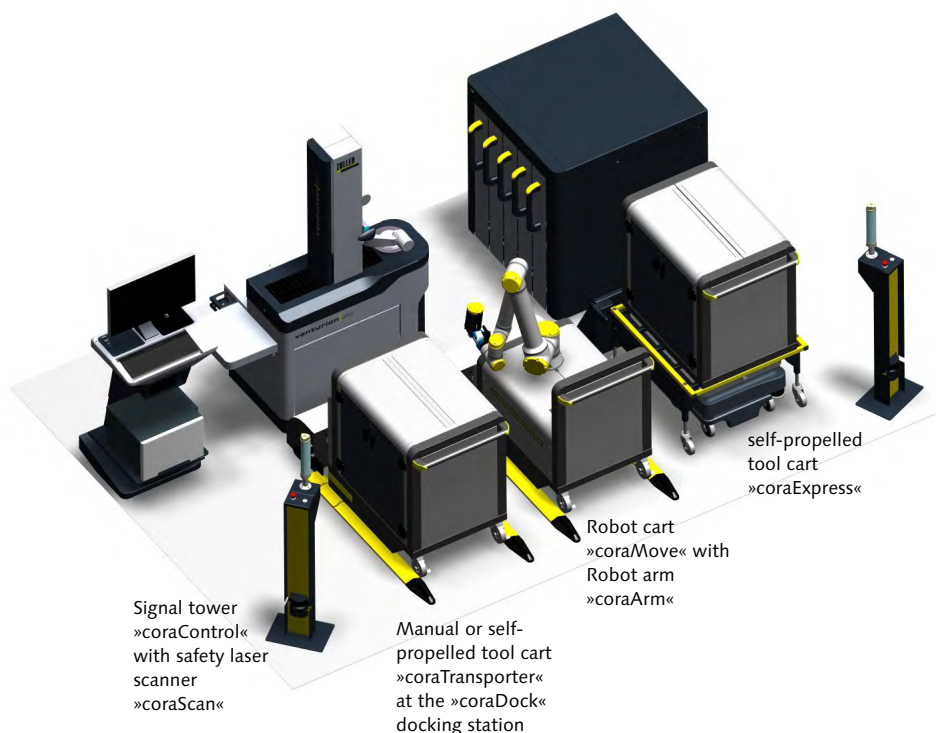


## Robotic System »cora«

The robot system »cora« can automatically take over many standard tasks in connection with tool handling and tool provision. There are solutions in the area of transport as well as presetting and measuring.

### Example configuration for the automated use of the robot system »cora«



### Transportation solutions



Tool cart »coraTransporter« with transport unit »coraExpress« and coupling unit »coraClutch«

### CORAKOMP

The »cora« robot system can perform standard tool handling tasks in the presetting and measuring area. In addition, there are various variants for tool transport as well as accessories for smooth operation with the aid of »cora«.

Altogether the robot system »cora« consists of many components. These include:

- The self-propelled tool carriage transport system »coraExpress« including coupling unit »coraClutch«
- The charging station »coraCharge« for the »coraExpress«
- The robot arm »coraArm«
- The manual robot cart »coraMove«
- The tool cart »coraTransporter«, automatically driven or manually pushable
- The manual or automatic docking station »coraDock« for positioning the tool trolley

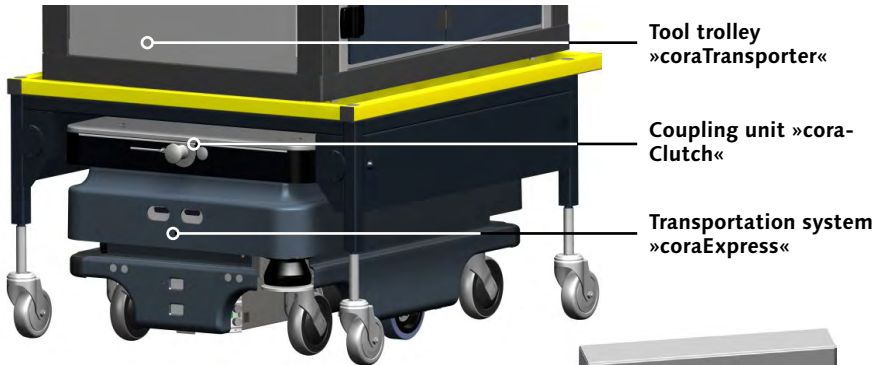
#### Other accessories:

- Smartwatch »coraWatch«
- Project specific control »coraLogic«
- Project-specific sensor technology for each station »coraSensors«
- Signal tower »coraControl« with emergency stop functionality
- Safety laser scanner »coraScan«
- Protective enclosures »coraProtect« (project-related)
- control software »coraSoft«



## Transporting Tools

### Self-propelled tool cart transport system »coraExpress«



Tool transport is carried out by means of tool carts - either manually by an operator or automatically.

### Transportation system »coraExpress«

The »coraExpress« self-propelled transport system hooks into the »coraTransporter« tool cart using the »coraClutch« coupling unit and moves it.



**Charging station »coraCharge«**  
for loading the transportation system »coraExpress«

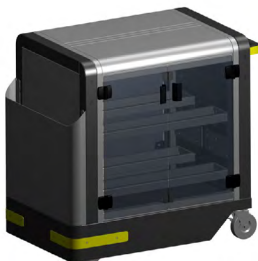
### Robot carts »coraMove«



### Robot carts »coraMove«

The robot cart can be moved by hand. During travel, the robot arm »coraArm« is in rest position.

### Tool cart



### Retrofitting

Existing standard tool cart can also be retrofitted with a protective housing and docking adapter for automated tool provision.

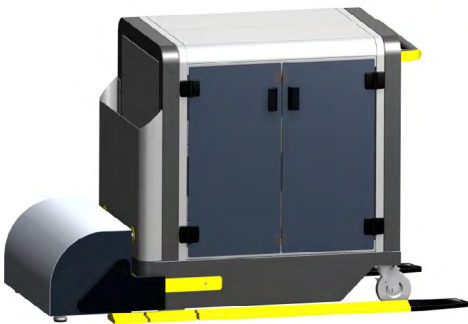
## Preset and Measure Tools



### Docking station »coraDock«

For exact positioning and centering of both manually and automatically fed tool or robot carts

If tools are to be adjusted and measured using the »cora« robot system, the correct position of the tool cart must be ensured so that the tools can be safely removed from the »coraArm« robot. On the other hand, safety precautions must be taken to avoid endangering people.



### Docked tool cart

The tool cart is in the exact removal position.



### Docked robot cart »coraMove«

The robot cart is supplied with power and data by a plug system.



### Signal tower »coraControl«

Signal tower »coraControl« with emergency stop functionality and mounted **safety laser scanner** »coraScan«



# Components of the Robot System »cora«

| Illustration  | Designation                              | Brief description  | Item number |
|---|--|--|-------------|
| <b>»cora« handling system</b>   |  |  |             |
|    | <b>»coraArm« collaborative robot arm</b> | max. load 10 kg, reach 130 cm<br>Incl. controller and software   | G600K13     |
|    | <b>Gripper module</b>                    | Automatic gripper basic module for connection to collaborative robot arm »coraArm« (gripper finger not included)                                       | G600K14     |
|    | <b>Gripper finger set HSK 63A</b>        | For automatic gripper module   | G600G29     |
|   | <b>»coraMove« manual</b>                 | Manually movable trolley for collaborative robot arm »coraArm« incl. connection option for charging the robot battery                                  | G600K23     |
|  | <b>»coraTransporter« manual</b>          | Manually movable tool cart for loading and unloading with »coraArm« including protective device for safe transport of tools                            | G600W08     |
|  | <b>»coraDock« manual</b>                 | Docking station for precise positioning of »coraMove« and »coraTransporter« manually   | G600K17     |
| <b>Software handling unit</b>   |  |  |             |
|  | <b>»coraSoft« Handling</b>               | Software for the control of autonomous handling sequences for collaborative robot arm »coraArm«<br>Flyer Z8702060                                      | 8702060     |
| <b>»cora« transportation system</b>   |  |  |             |
|  | <b>»coraExpress«</b>                     | Collaborative self-propelled transport robot for moving loads up to 200 kg   | G600K01     |
|  | <b>»coraClutch«</b>                      | Coupling module for mounting on mobile transport robot »coraExpress« in order to automatically move tool cart of the type »coraTransporter« automatic. | G600K21-001 |
|  | <b>»coraCharge« charging station</b>     | For collaborative self-propelled transport robots »coraExpress«  | G600K02     |



| »coraTransporter«   |  |  |             |
|---|--|--|-------------|
|    | <b>»coraTransporter«<br/>automatic</b> | Tool cart with connection points for »coraClutch« including protective device for safe transport of tools                                      | G600K15     |
|    | <b>»coraDock« automatic</b>            | Docking station for precise positioning of the tool cart »coraTransporter« automatic (1x required for each stopping point)                     | G600K21-003 |
| Software transportation system  |  |  |             |
|    | <b>»coraSoft« transport</b>            | Software for the control of autonomous transport processes with »coraExpress«<br>Flyer Z8702061  | 8702061     |
| Operating environment / safety  |  |  |             |
|    | <b>»coraControl«</b>                   | Control and acknowledgement device including emergency stop button and signal tower  | G600K24     |
|   | <b>»coraScan«</b>                      | Safety laser scanner for scanning the safety area of the collaborative robot environment<br>(selective division into danger areas is possible) | G600K31     |
|  | <b>»coraProtect«</b>                   | Static protective enclosure incl. sluice door<br>(execution project-related)   | G600K32     |
|  | <b>»coraLogic«</b>                     | Logic control when using the »coraControl« signal tower  | G600K28     |
|  | <b>»coraSensors«</b>                   | Sensors for control, monitoring and regulation of »cora« components such as docking and loading stations<br>(execution project-related)        | G600K29     |

